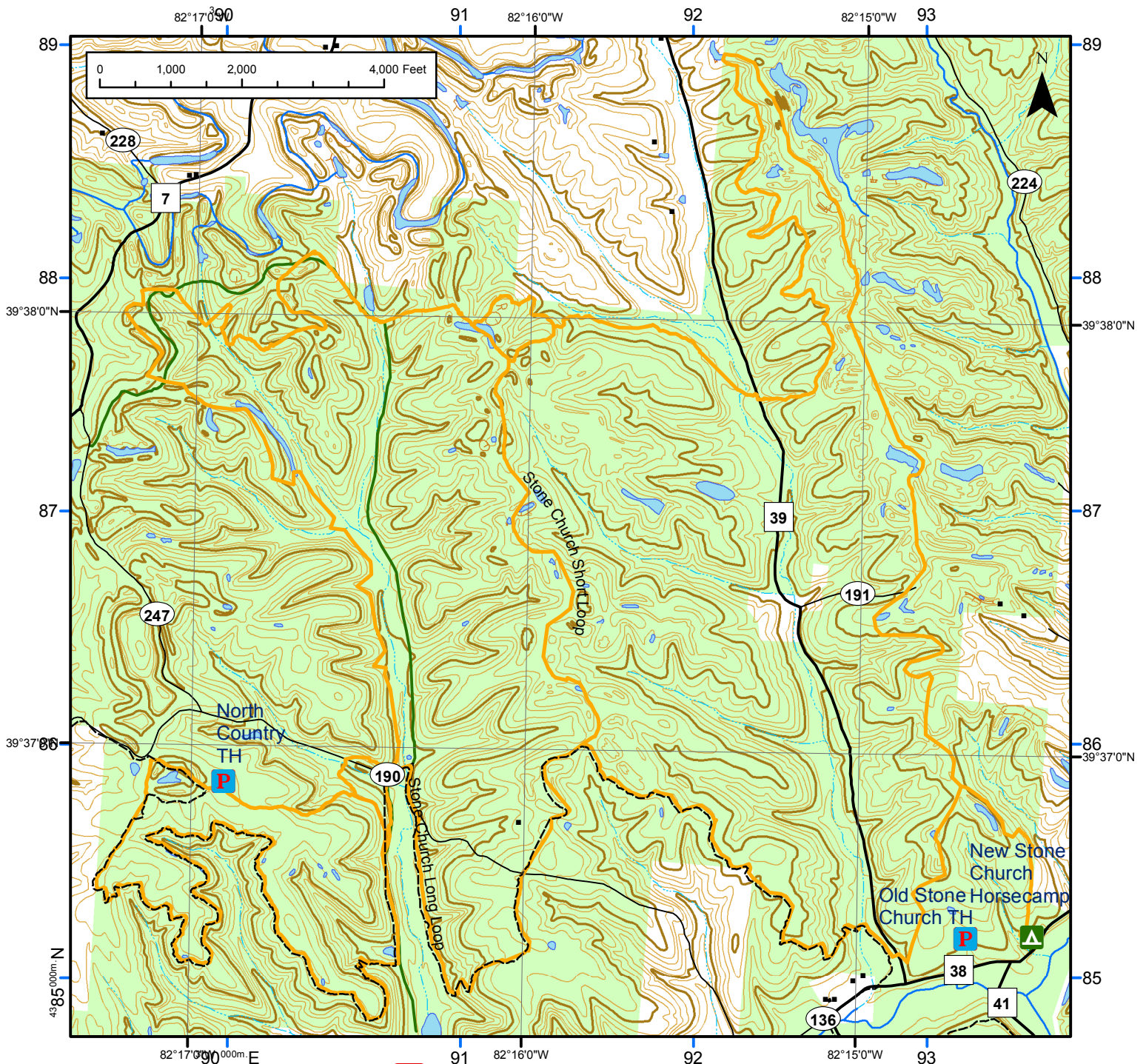


# Stone Church Horse Trail



## Trailheads

	Latitude/Longitude (WGS 84)
New Stone Church Horsecamp	N 39° 36' 39.57" W 82° 14' 32.32"
Old Stone Church Trailhead	N 39° 36' 31.51" W 82° 14' 51.88"
North Country Trailhead	N 39° 36' 54.7" W 82° 16' 54.47"

## New for 2012

Permits may be purchased on line (Wayne NF Website) and printed from home or any location with access to a color printer.



## In Case of Accident or Injury

Call 911 or Local Sheriff's Office  
 Perry County 740-342-4123  
 Hocking Valley Community Hospital, Logan  
 740-380-8203  
 Fairfield Medical Center, Lancaster  
 740-689-6600  
 Wayne National Forest - Athens Ranger District  
 740-753-0101

## Basic Trail Rules

- Trail permits are required for riders age 16 and older.
- Riders 15 years old and under should be accompanied by an adult.
- For your safety, please stay on designated trails (marked with gray diamond markers).
- For your safety, please don't ride alone.
- Please pack out what you pack in.
- Please notify our office of any downed trees blocking the trails.

## Legend

- Forest Service Horse Trails
- Intersections
- National Forest Land
- Trailhead
- Campground
- North Country Trail (Hiking)
- US Highways
- State Routes
- County Roads
- Township Roads
- Forest Service Roads

