

Strouds Run State Park Trail Map

Park location:
 11661 State Park Road
 Athens, Ohio 45701
 (740) 592-2302

Administrative office:
 Burr Oak State Park
 10220 Burr Oak Lodge Rd.
 Glouster, Ohio 45732
 (740) 767-3570 - Burr Oak Park Office







TRAILS

-  Hiking Trails
-  Hiking/Biking Trails
-  Hiking/Bridle Trails

DIRECTIONS

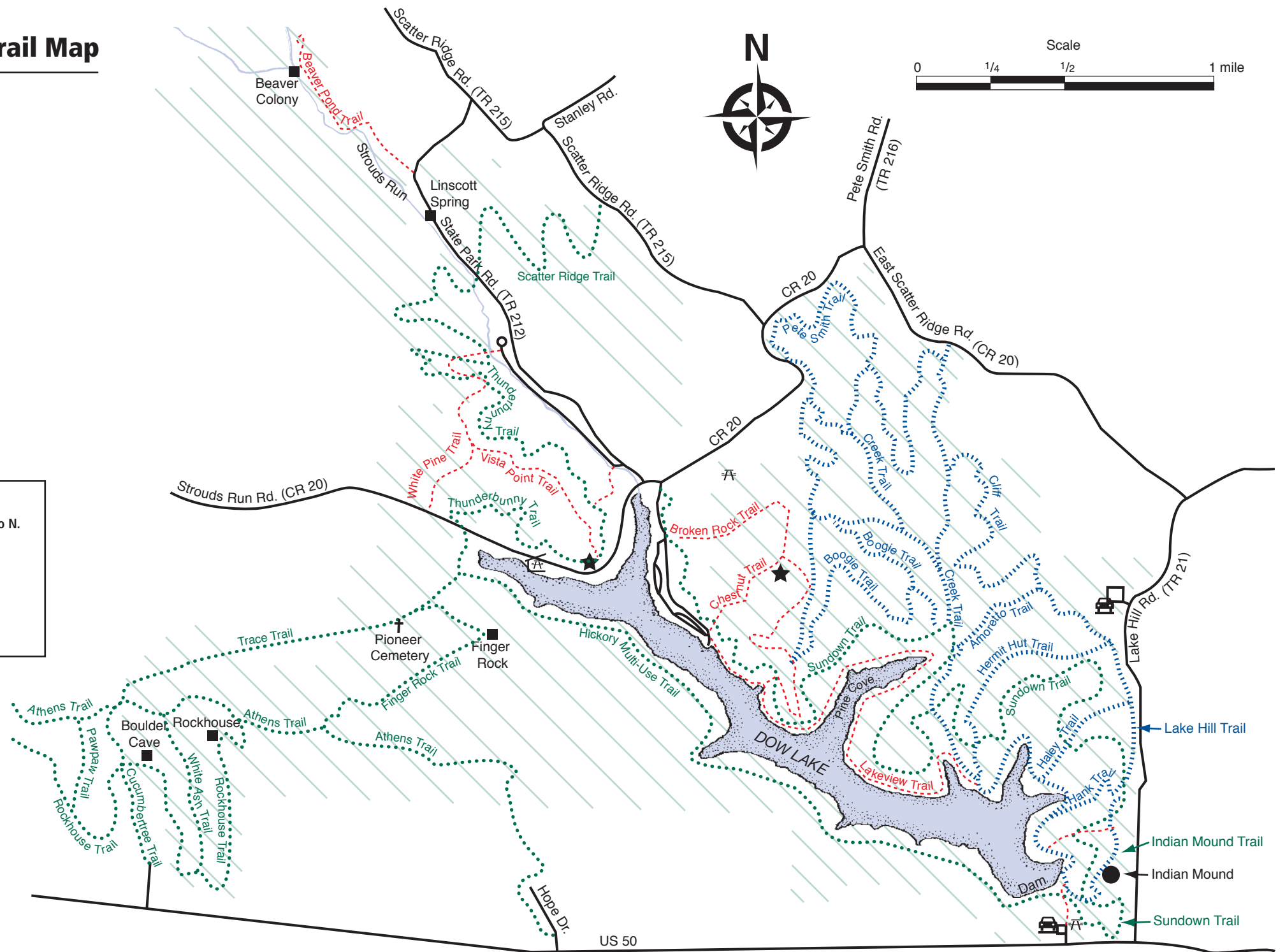
From Columbus, exit US 33 onto Columbus Road.
 At the traffic light, turn left off Columbus Road onto N. Lancaster Street.
 N. Lancaster Street becomes Columbia Ave.
 Continue on Columbia Ave. to the US 33 overpass.
 Columbia Ave. ends and Strouds Run Road (CR 20) continues over US 33.
 Travel approx. 2 miles to Strouds Run State Park.

LEGEND

-  Picnic Area
-  Picnic Shelter
-  Latrine
-  Parking
-  Pioneer Cemetery
-  Scenic Overlook

 State Park Hunting Area
 (see hunting map for details)

Rev. 6/12



US 50